

## COMPANY PROFILE

<b>Trading name</b>	Tokyo Power Technology Ltd.
<b>Location</b>	5-5-13 Toyosu, Koto-ku, Tokyo,135-0061 Japan Tel +81 3-6372-7000 Fax +81 3-6372-4160
<b>President</b>	Jun Motohashi
<b>Founded</b>	July 1 2013
<b>Capitalization</b>	100 million yen
<b>Sole shareholder</b>	Tokyo Electric Power Company Holdings, Inc.(100%)
<b>Employees</b>	2,509(as at June 1 2025)
<b>Main business activities</b>	<p>Surveying, preliminary design, construction, modification and upgrades along with facility operation, maintenance and management for buildings and structures, fixtures and fittings, and equipment and machinery at power and heat utilities and manufacturing facilities</p> <p>Construction, measurement and seismic monitoring services; surveying, planning, design, project management and consulting services for construction and civil engineering projects</p> <p>Environmental surveying, monitoring and assessment; material composition analysis, monitoring and surveying services</p> <p>Industrial waste cartage, disposal, recycling and brokerage services; general waste cartage</p> <p>Radiation monitoring and management; decontamination and disposal of radioactive materials; treatment and disposal of radioactive waste</p> <p>Nuclear fuel handling services</p> <p>Agency for nonlife insurance products; life insurance recruitment services; agency for processing premiums for life and nonlife insurance products</p> <p>Leasing and management of buildings and real estate as well as movable property other than expendables</p> <p>Management and upkeep of forestry roads and land</p> <p>Construction and upkeep of wooden walkways and other park infrastructure, along with wetland regeneration and other conservation programs in the Oze National Park; environmental education and promotion initiatives; travel services; operation of mountain villas, restaurants and retail outlets</p>

### ISO certification

Certification Standard	Organization Name	Approval Certificate	Approved by
ISO9001:2015	Engineering Department Engineering Center	QSR-005	JAPEIC
	Nuclear Power Division	QSR-031	JAPEIC
	Civil Engineering & Architectural Division	QSR-036	JAPEIC
	Thermal Power & Industrial Plants Division	QSR-103	JAPEIC
ISO14001:2015	Environmental Division Recycling Center	E16-658	JET
ISO17025:2017	FUKUSHIMA Nuclear Power Branch	L16-247	PJLA
ISO17025:2017	Environmental Division Chemical Analysis Center	L18-176	PJLA
ISO17025:2017	NIGATA Nuclear Power Branch	L23-161	PJLA

 **Tokyo Power Technology Ltd.**

5-5-13 Toyosu, Koto-ku, Tokyo,135-0061 Japan  
Tel: +81 3-6372-7000  
<https://www.tokyo-pt.co.jp>

Copyright © Tokyo Power Technology All Rights Reserved. 1020-004-07-2507



Source: Tokyo Electric Power Company Holdings



# Tokyo Power Technology

# Experience, Technology and Environmental Solution is the Power for Achieving the Future

Tokyo Power Technology has years of experience providing engineering services for all types of power generation facilities. We design and build sustainable, environmentally-driven solutions for a variety of applications and scenarios, with a strong focus on safety and quality standards on site. With these strengths combined, we will continue to move forward and strive to open new doors for the future.

## From the President

Tokyo Power Technology (TPT) was founded in July 2013 through the unification of Tokyo Electric Power Environmental Engineering, Toden Kogyo, and OZE Corporation.

The unification brought together a wealth of experience and expertise from different fields, most notably power plant construction and operation, environmental and energy solutions, which created new synergies that allow us to offer a comprehensive range of engineering services for construction, operation and maintenance of power plants. TPT also takes pride in the extensive range of environmental and renewable energy solutions and many other initiatives that contribute to the creation of a more sustainable society, including environmental conservation projects in the Oze National Park, the Oze Sanso guest house, and commercial insurance products.

Our entire team is strongly committed to the Fukushima reconstruction efforts, not only taking part in the decommissioning of the Fukushima Daiichi (No.1) and Daini (No.2) nuclear power plants, but also in the decontamination of the surrounding area and the restoration of its infrastructure.

At a time of rapid change and evolution in the energy sector, TPT will continue to make safety its highest priority, protect and develop human resources and technologies while driving transformation and taking on new challenges. Through this, we aim to provide the world's leading technologies and solutions in order to bring satisfaction to our customers.

We look forward to your continued support on our journey.

President **Jun Motohashi**



### Contents

From the President .....	02
About Us/History .....	03
Thermal Power and Industrial Plants .....	05
Environmental Infrastructure	
• Environmental Solutions .....	07
• Renewable Energy .....	09
• Civil Engineering .....	10
• Insurance Services .....	11
• Oze Environmental Conservation Program (Oze Guardians) .....	12
Nuclear Power .....	13
Employee Training .....	15
Welding and Non-Destructive Testing .....	16
Health and Safety, Quality Control and Environmental Programs .....	17
Fukushima Reconstruction Efforts .....	18

# About Us

Tokyo Power Technology (TPT) is a core member of the TEPCO Holdings, boasting extensive experience in power plant and environmental infrastructure projects together with a high level of technical expertise in all aspects of power plant facilities. We offer a comprehensive suite of engineering services contributed to operational stability and cost optimization at all stages of the plant life cycle, from preliminary surveying and concept design to planning, construction, O&M (operations and management), upgrades and improvements, and final decommissioning and removal. With a broad range of technical expertise, we are in a unique position to provide a total package encompassing the entire life cycle of the facility.



## Thermal Power and Industrial Plants

Replacing existing thermal power plants and building and maintaining newly constructed plants including those in Fukushima area.

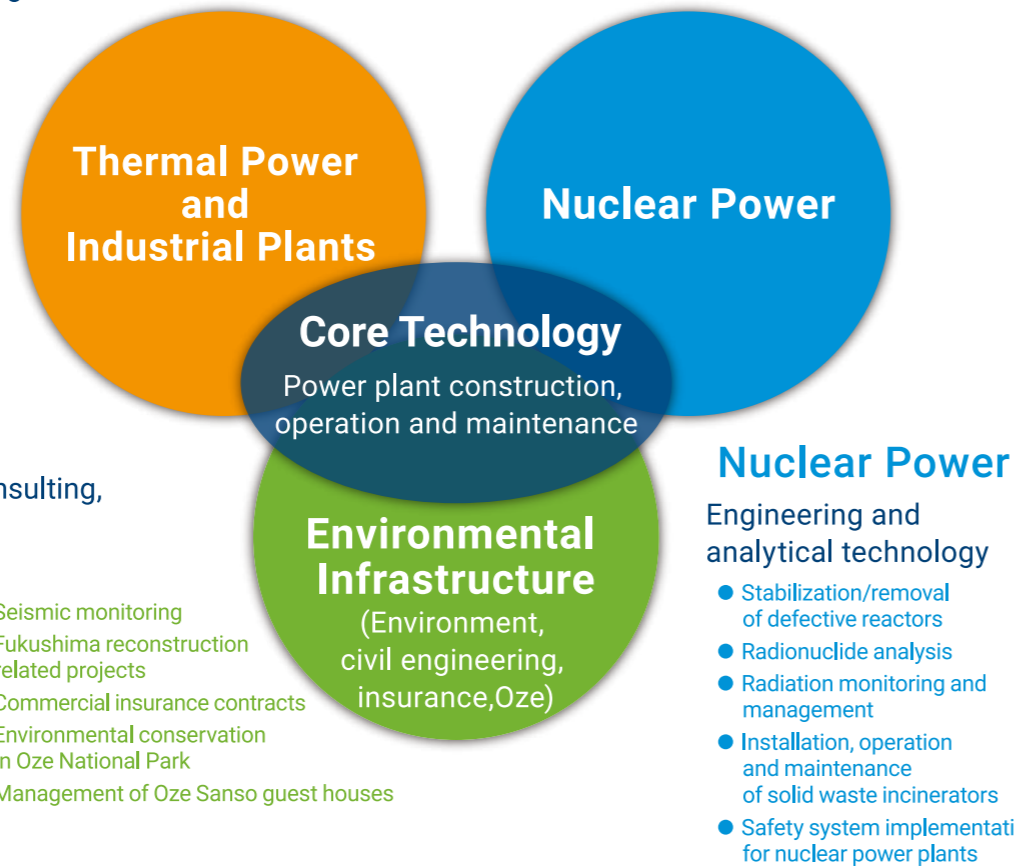
- EPC,O&M
- Owners engineering
- Power plant maintenance efficiency improvements
- Thermal power plant replacement
- Construction/maintenance of new small-scale power sources

## Environmental Infrastructure

Comprehensive suite of consulting, surveying, analysis and operational services

- Recycling of solar panel waste
- Environmental impact assessment
- Greening and beautification works
- Renewable energy
- Recycling power plant by-products
- Seismic monitoring
- Fukushima reconstruction related projects
- Commercial insurance contracts
- Environmental conservation in Oze National Park
- Management of Oze Sanso guest houses

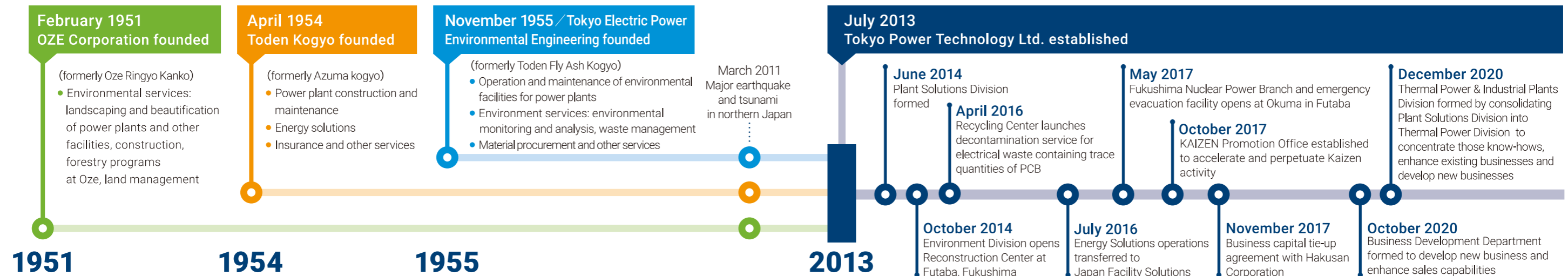
### What we do



### Why choose TPT?



# History





# Thermal Power and Industrial Plants

Thermal power plants need to operate without interruption for 24 hours a day, 365 days a year. Power plant design, construction and operation requires a high level of specialized technological expertise across a range of operational fields. TPT has considerable technical expertise in supplying industrial plants and thermal power plants with a wide range of services designed to boost quality standards and reduce operating costs with minimal construction lead times. We are also actively involved in R&D into new technology and construction techniques in this sector.

## Planning and Design

TPT provides a range of “innovation services” for thermal power plants including initial planning, submission of application documents, environmental assessment, design and procurement of equipment and machinery, and planning and supervision of inspection and maintenance. We can assist at all stages of the design process, from the preliminary design outline through to the detailed design drawings, including structural, stress, fluid and thermal calculations. Meanwhile, TPT is actively involved in the development of new construction techniques and other technical innovations.

## Construction and Upgrades

TPT is involved in the construction and upgrading of a wide variety of power plants of varying sizes and uses, all designed around the key criteria of safety, quality and cost-effectiveness. We boast considerable experience in facility operation and maintenance, as well as specialized services such as non-destructive testing.

## Operational Services

TPT provide operations services for a variety of power generation facilities including biomass, solar and emergency power plants as well as conventional thermal power stations, using many years of experience with commercial thermal power stations to ensure maximum efficiency and ensure operational stability and longevity. Our highly experienced technicians also operate demineralized water and wastewater treatment facilities for power plants.

## Maintenance

Periodical maintenance of power plants is mandated by law. TPT has recently developed a Kaizen-based maintenance system that slashes lead times while reducing maintenance expenses. Our maintenance services help to maximize the performance of mechanical equipment employing multiple fuel types; these include disassembly and inspection of special-purpose machinery, insulation testing of generators and high-voltage motors, and repairs for all makes and models of controllers and monitoring equipment and devices.

## End-of-life Equipment Disposal

TPT will remove and dispose of aging or degraded power generation equipment and machinery in a safe and environmentally-conscious manner. We also offer environmental consulting, recycling and industrial waste disposal services.



# Environmental Infrastructure

TPT is committed to working towards a sustainable world where industrial progress goes hand in hand with environment preservation and conservation efforts. We apply our extensive experience and innovative technological solutions to a variety of environmental challenges in order to deliver better quality of life while creating a better world to leave for future generations.

## Environmental Solutions

TPT boasts a wealth of experience and technical expertise in a broad range of environmental solutions such as power plants and renewable energy systems that provide much-needed energy supplies to communities without damaging the environment and local ecosystems.

### Environmental Impact Assessment (EIA)



As the world moves to embrace sustainable models of society, developers are expected to implement EIAs before commencing development projects in order to minimize environmental impact. TPT offers a range of environmental surveying, forecasting and assessment services from the feasibility study phase, and supports the sustainable development that cooperated with local community, while considering local environmental problems.

### Environmental Analysis and Monitoring



TPT is a certified monitoring agency supplying analysis and monitoring services that assist businesses in ensuring compliance with environmental standards and regulations. Our experienced engineers use the latest analytical equipment and devices to assess air quality, water turbidity and pollution and contamination levels in accordance with legislative requirements.

### Recycling Waste Solar Panels

The use of solar power systems is increasing as efforts toward achieving carbon neutrality accelerate. At the same time, proper processing and management of used solar panels is important in supporting sustainable energy practices.

In April 2021, we started recycling solar panels at the Kawasaki Recycling Center in Ogishima, Kawasaki-ku, Kawasaki. This facility employs special equipment to disassemble used solar panels and separate them into components such as glass, aluminum frames, and cell backsheets. All of them are fully recycled as reusable materials.

◀ Solar panel recycling factory

### Greening and Beautification



TPT greening and beautification services create attractive microclimates that maximize the restorative and calming benefits of natural beauty at facilities such as schools, hospitals and nursing homes as well as public parks and reserves. We manage green spaces with a view to providing safe and beneficial assets for future generations.

At production facilities, where productivity is paramount, providing workers with pleasant surrounds in the form of natural landscaping is a key aspect of facility design. TPT offers consulting and advice on greening and beautification works as well as ongoing maintenance of natural land areas around production facilities.

### Environmental Conservation and Biodiversity Strategies



TPT is committed to the preservation and regeneration of local natural assets together with the associated cultural and historical benefits through a range of conservation and planting programs in mountain and coastal areas that are helping to preserve local indigenous

plant stocks, rejuvenate swamplands and wetlands, and promote local environmental conservation efforts.

We have considerable experience in reconstruction work following natural disasters, such as rebuilding river banks and bridges, as well as a range of environmental services ranging from secure waste treatment and disposal to regeneration of denuded forest areas.

### Environmental Education

TPT is working on planning and running practical natural environmental education programs that incorporate our experience with nature conservation activities in Oze National Park as well as our skill in creating green spaces in urban factory sites. We provide support for everything from creating nature conservation activity programs to dispatching on-site presenters.



### Environmental Solutions

TPT is working on developing technologies that take into consideration both people and their environment, as well as the economy. Examples include efficient environmental surveying techniques and eco-friendly paint development.



■ Environmental Infrastructure

## Renewable Energy

Drawing on the experience and expertise of the TEPCO Group in the construction of power transmission and distribution infrastructure, TPT is able to offer a full range of planning, design and construction services for renewable energy solutions, with a particular focus on interconnecting new solar and wind power plants to the utility power grid. More recently, we have added biomass power plant operation to our services. Our planning team delivers optimized outcomes from the design phase through to the construction phase, tailored to the local conditions and our client's needs.

### Planning and Design

TPT can assist all aspects of the planning and design process including site layout, detailed design, permits and applications to regulatory authorities.

- Environmental assessments, geological surveys, site layout designs for all types of power plants
- Preliminary designs, provisional works, various studies
- Negotiating interconnections with the utilities
- Negotiating client-owned transmission lines with road authorities

### Construction and Upgrades

TPT has extensive experience in preliminary processes such as site preparation, interconnection negotiations, and verification testing.

- Constructing foundations, installing equipment, cables and wires
- Pre-commissioning tests and safety inspections in compliance with applicable laws
- Equipment testing and training prior to handover

### Maintenance

After the facility is handed over, TPT offers ongoing maintenance services for the installed power transmission facility interconnecting the power plants to the utility grid.

- Monitoring the structural integrity of built structures
- Monitoring the operational status and structural integrity of installed equipment
- Faults and defects assistance; expansion/upgrades/removal of equipment



■ Environmental Infrastructure

## Civil Engineering

TPT offers comprehensive services involving civil engineering solutions for power plants and various facilities, from initial design and construction to modifications and upgrades as well as ongoing inspection and maintenance services.

We undertake maintenance plan proposals based on the minimum life cycle cost approach, as well as energy-saving solutions and coal ash recycling systems for thermal power stations.



### Design, Inspection, and Maintenance

TPT offers a range of services for civil engineering projects such as power plants, including site surveys, concept designs, planning of temporary structures, facility design and construction and associated consulting services. We also provide construction and execution monitoring and management services that include evaluation of construction methodologies, quality control and process management as well as completion inspections of concrete buildings ranging from general external visual appraisals to detailed testing and verification using the latest analytical equipment.

We can assist formulation of preventative maintenance schedules based on a combination of equipment diagnostics (compiled from data such as regular inspection records, deterioration analysis and repair history) and early fault detection, and advise on effective use of diagnostics data to minimize repair costs. The benefits of maintaining a long-term database of inspection and monitoring data were evident in the damage analysis and reconstruction effort following the March 2011 earthquake and tsunami.



### Coal Ash Recycling

TPT supplies recycling systems for a variety of different applications such as using coal ash by-product from thermal power stations to produce wave-dissipating blocks and slurry mortar for backfilling during construction, as well as RCP to extend the service life of coal ash disposal sites.



### Energy-Saving Solutions

TPT is committed to promoting energy-saving solutions such as high-strength, high-performance thermal insulating materials and rapid-drying waterproofing and thermal insulating treatments for water tanks.

### Seismic Observation and Analysis

TPT provides logistical support for more than 1,000 ch of seismic observation at 359 sites, mostly nuclear power station facilities operated by the TEPCO Group, generating a central database of nearly 7,500 seismic records to date.

We supply seismic activity updates from the Bureau of Meteorology in real time, along with a wide range of analytical data integrating seismic observation data obtained from other agencies and from clients.



■ Environmental Infrastructure

## Insurance Services

TPT acts as a corporate insurance agent for the TEPCO Group, combining extensive experience and expertise with an attractive line-up of insurance products designed to help minimize business risk. (This service is only available in Japan)

### Business Stability Reduces Risk

TPT boasts technical expertise in a wide range of fields, most notably power plants and environmental infrastructure, and we have developed a corresponding range of unique tailored insurance products that offer the safety and security of insurance solutions optimized to the particular risk profiles and requirements of each field.

#### Risk minimization insurance products for power plants and environmental infrastructure projects



### Being Prepared

#### Asset products

- Fire and earthquake insurance
- Constructor's all risk insurance
- Erection all risks insurance
- Machinery insurance
- Movables comprehensive insurance

#### Vehicle products

- Vehicle insurance



#### Operational liability products

- Liability insurance
- Subcontracting, products, facilities, consignees, IT services
- Data security insurance
- Employment practices liability (EPL) insurance

#### Business products

- D&O liability insurance
- Life insurance
- Accident insurance



#### Employee products

- Comprehensive workplace accident insurance
- Income indemnity insurance
- Health insurance
- Domestic and overseas travel insurance

#### Credit products

- Performance guarantee insurance
- Big guarantee insurance

#### Consequential loss products

- Business costs and profits insurance
- General commercial credit insurance



■ Environmental Infrastructure

## Oze Environmental Conservation Program (Oze Guardians)

Oze National Park is a place of great beauty, surrounded by stunning mountains, home to plants that flower all year round, and blessed with crisp fresh mountain air. The Oze Guardians are committed to protecting and preserving this natural haven for future generations to enjoy, by building wooden footpath and huts that provide access without damaging the integrity of the natural environment.

### Protecting the Air and Water

Oze is a popular destination for nature lovers. In response to concerns about the potential impact of increased usage of public toilets and huts, TPT has installed a number of purification tanks to maintain water quality standards, along with solar panels, electric water heaters, compact home generators and open-style gas burners to reduce exhaust emissions.

dangerous) may need to be trimmed or cut back. Safety inspections are particularly important after weather events such as heavy rains and typhoons.

### Oze Tokura Forest Region

The expansive Oze Tokura forest is a precious riverhead as well as a place of outstanding natural beauty. The forest is owned by TEPCO Renewable Power and maintained by TPT, primarily through regular inspections and thinning operations to prevent overcrowding. Our sustainable forestry management program was certified by the Forest Stewardship Council in 2010.

### Maintenance of the Wooden Footpath

The Oze National Park has around 65 km of wooden footpath in total, of which 20 km are owned by TEPCO Renewable Power and maintained by TPT. Since antiseptic agents cannot be used in mountainous areas, the wooden footpath must be replaced every ten years or so in accordance with a meticulously planned maintenance schedule. Materials have to be flown in by helicopter and construction is largely dependent on manual labor since vehicles are not allowed to access the park.



### Regeneration of Ayamedaira Wetland

The Ayamedaira area in Oze, also known as Tenjo no Rakuen (Paradise in Heaven), suffered from over-visitation in the 1950s and 1960s. After 1969, every year from July through October, TPT conducts regeneration and afforestation works on the Ayamedaira wetlands. We are also conducting an ongoing series of wetland regeneration experiments under the supervision of botanical experts. So far we have restored nearly 90% of the damaged wetland through peat transplanting and dissemination work.



### Park Safety

In addition to mountain trails, the Oze National Park has visitor infrastructure such as wooden and stone steps and benches that require regular safety inspections. Trees that have fallen across trails (or are otherwise considered

# Nuclear Power

TPT provides a comprehensive range of services for nuclear power plants. In addition to vital work on the decommissioning at the Fukushima Daiichi (No.1) nuclear power plant, we play a key role in facility construction and upgrading, radiation monitoring and management, facility operations, waste treatment and administration systems at the Fukushima Daini (No.2) and Kashiwazaki-Kariwa power plants, TPT provides services such as radioactivity analysis at other nuclear facilities (for example: JNFL (Japan Nuclear Fuel Limited)).



## Facility Construction and Upgrades

TPT installs safety systems and mechanisms aligned to the latest seismic standards and safety regulations for nuclear power plants, such as filtered containment venting systems designed to prevent severe accidents by suppressing emissions from radioactive substances. As of January 2018, TPT is also an officially accredited in protection and construction of fire department with specified construction work permission.



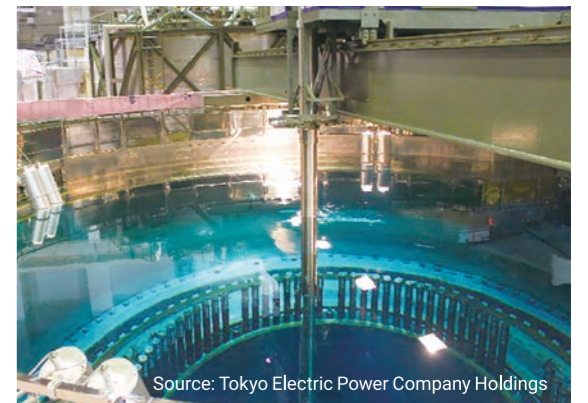
## Facility Management

TPT provides a range of facility management services for nuclear power plants, including system water analysis, radiation and radioactivity monitoring and waste treatment and storage, as well as condition based maintenance of rotating machinery such as pumps. We also manage storage facilities for solid radioactive waste including sealing waste in drums.



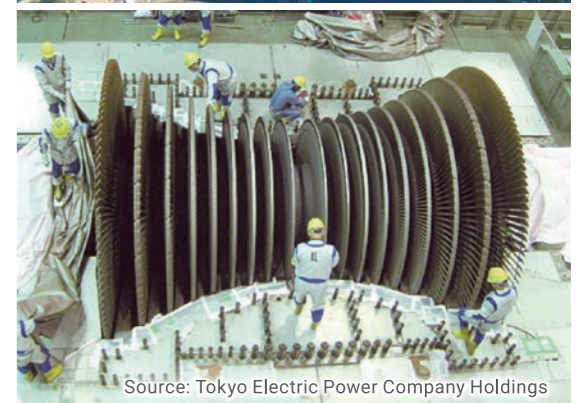
## Operational Services

TPT operates waste treatment facilities for radioactive waste from nuclear power plants. Liquid waste is filtered and concentrated, non-inflammable radioactive waste is transferred to drums for storage, and both flammable and flame retardant waste are incinerated. We also operate fuel replacement systems for removing spent fuel and loading new fuel into reactors.



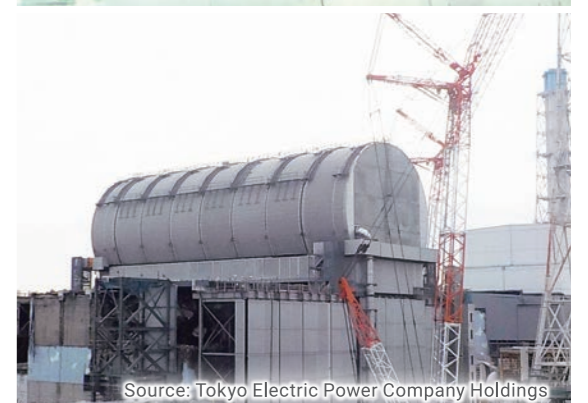
## Maintenance

TPT provide periodical inspection, maintenance and repair services for power generation equipment, electrical systems, motors, instrumentation, and pumps and valves used in waste treatment and incineration systems at nuclear power stations, as well as ad-hoc inspection and repair of peripheral machinery and equipment.



## Decommissioning

TPT is directly engaged in many aspects of the ongoing process of stabilizing and decommissioning the Fukushima Daiichi nuclear power plant, including cooling fuel, removing spent fuel, managing contaminated water and other waste, monitoring radiation levels and providing support services to the workers.



# Employee Training

The ongoing growth and success of TPT is predicated on sweeping reforms designed to ensure the fundamentals of the business are sound, as well as a workforce that is truly dedicated, enthusiastic and willing to take on new challenges.

To this end, we have put in place a number of systems and structures such as training frameworks and skills certification schemes to promote the acquisition of next-generation skills and competencies, along with ongoing R&D and Kaizen (continuous improvement) programs.

## HR

### Cultivating the technical skills and competencies for future growth and success

- We aim to make TPT the supplier of choice through in-house training programs to enhance personal skills and competencies as well as creative thinking.
- We provide high-level technical training programs in skills and competencies that will drive future expansion.
- We encourage all employees to embrace the challenges involved in reform and renewal.

## Kaizen (Continuous Improvement)

### Building a strong and resilient workplace

- We are working to boost productivity and maximize enterprise value by reducing 5S wastage and promoting Kaizen programs at all levels of the organization.

- By embracing Kaizen and promoting its achievements and successes within the organization while at the same time actively seeking out feedback from clients and business partners, we strive to enhance the speed and efficiency of technical development and Kaizen programs.



# Welding and Non-Destructive Testing

TPT works together with customers to address technical issues and challenges. All welding at power plant facilities is performed in accordance with the Electricity Business Act and the Act on the Regulation of Nuclear Source Material, Nuclear Fuel Material and Reactors. Non-destructive testing is used to check for flaws in metal materials during construction and subsequent scheduled maintenance.



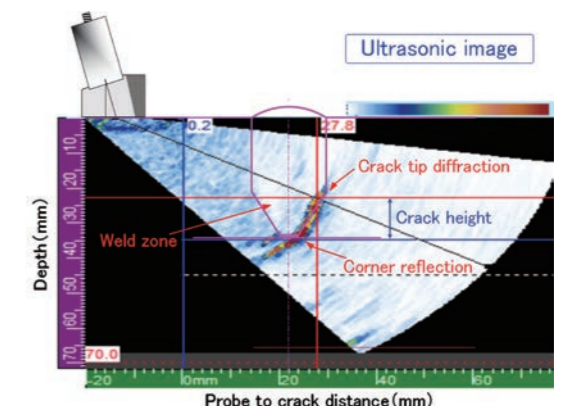
## Advanced Welding systems



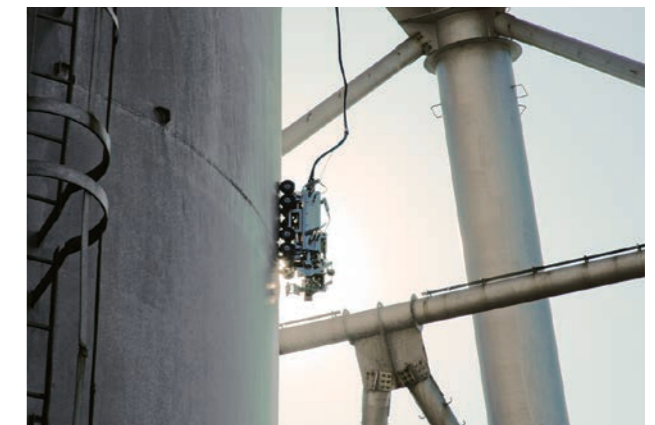
- TPT employs 80 different welding methods at power plants depending on the type of steel or other construction material and the specific requirements.
- Our meticulous weld inspection process, in combination with our insistence on using only certified private-sector products in thermal power plants, helps to minimize the inspection workload incurred by our customers.
- TPT possesses exceptional technical capabilities, as is evident from our strong performance in welding competitions, and we can perform welding on-site in confined locations.



## Accurate and Reliable Non-Destructive Testing Systems



- TPT leverages the features of high-resolution phased array ultrasonic detectors, fusing them with CAD drawings for accurate flaw position and dimension measurement. We also manufacture special sensors capable of detecting flaws in a wide range of welding locations.
- For large structures, we have developed remote-controlled inspection robots used to measure the thickness of plates located in high altitude and difficult to access areas, large diameter pipes, and floating roof tank walls.



# Health and Safety, Quality Control and Environmental Programs

Our clients expect the highest level of commitment to safety and quality standards along with compliance obligations and environmental stewardship. Through our business operations we contribute to local communities and society in general.

## Health and Safety

### Creating a Safe and Secure Workplace



- TPT is committed to full compliance with all relevant occupational health and safety laws and ordinances along with internal health and safety regulations and safety requirements nominated by clients, and to promoting a safety-first culture in all aspects of our operations.
- The worker health and safety management system is closely integrated into project schedules, with clear chains of command for addressing health and safety issues. All employees are involved in ongoing implementation and improvement programs designed to boost health and safety standards both in the workplace and in the public sphere.
- All employees of TPT and partner companies are

involved in workplace accident prevention programs such as TBM-KY with risk assessment. TPT is committed to full and open communication with partner companies as well as thorough and considered investigation of all workplace accidents and near-miss incidents.

- TPT sees occupational health and safety as the basic foundations for employee health and well-being. We believe that regular health checks, limits on overtime and open communication represent the best way to prevent mental health issues that can prevent employees from being at their best.

## Quality Control

### A Trusted Business Partner

- TPT is committed to full compliance with the relevant legal obligations as well as contractual agreements and conventions that apply to all aspects of our operations.
- Quality management systems at TPT are subject to ongoing review and improvement via the PDCA cycle as part of the continuous quality improvement process.
- Quality programs based on well-defined and achievable targets are used to ensure the highest quality standards in both installations and services delivered.

## Environmental Solutions

### Our Commitment to the Environment

At TPT, our environmental goal is to help create sustainable models that minimize the environmental impact of human society. TPT is ranked class A in the S-A-B-C energy efficiency ranking system for Specified Business Operators administered by the Agency of Natural Resources and Energy.

By promoting the Cool Biz campaign and providing visual indicators of office temperatures, we strive to provide employees with comfortable office spaces where they can make a positive contribution to the environment by helping to reduce energy consumption and cut greenhouse gas emissions.

# Fukushima Reconstruction Efforts

Working together with national and local governments, we support reconstruction efforts in Fukushima through a wide range of initiatives, including radiation management, facility operations, environmental analyses, and the restoration of green spaces and satoyama (traditional rural woodlands).



## Managing Radiation Safety and Facility Operations

Our services include radiation measurement and control, radiation safety training for decontamination work, support for temporary home visits to restricted areas, and the operation and maintenance of interim storage facilities.

- Providing advice on radiation management
- Issuing radiation control logbooks and managing radiation workers
- Overseeing radiation control and operations at waste volume reduction facilities



## Reducing Radiation Levels in Difficult-to-Process Materials

We reduce radiation levels in contaminated materials—such as equipment and tools—that are difficult to process due to radioactive contamination. We also conduct verification tests using a variety of methods to reduce radiation levels in materials with complex shapes or varying compositions that pose challenges in decontamination work.



## Conducting Environmental Analyses and Measurements

We analyze and measure radioactivity levels in collected samples such as soil and water. Germanium semiconductor detectors are used to perform measurements ranging from short-duration scans to extended analyses with lower detection limits. We also conduct additional radioactivity/chemical analyses and soil testing within the premises of the technical demonstration field at the interim storage facility.



## Maintaining Green Spaces and Revitalizing Satoyama Landscapes

We maintain vegetation within the interim storage facility through activities such as tree surveys, felling, and weed control. Forest management practices such as thinning are also carried out to help revitalize local forestry businesses and ensure safety for residents.

